

\$79,000 - Ne 8-48-6-w5, Rural Brazeau County

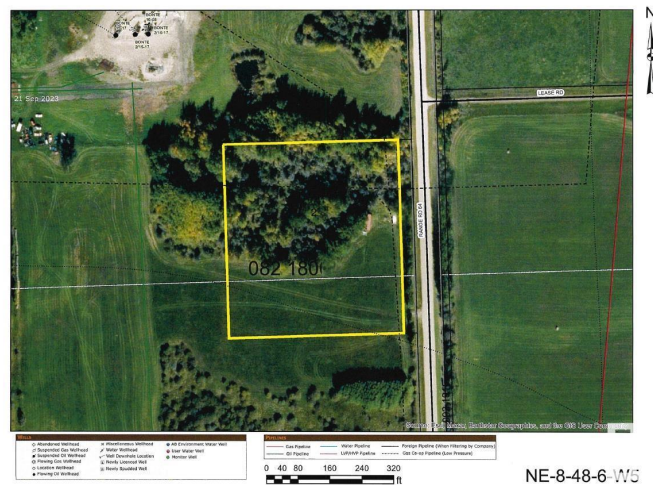
MLS® #E4411519

\$79,000

0 Bedroom, 0.00 Bathroom,
Rural on 4.99 Acres

None, Rural Brazeau County, AB

5 acre parcel located just one mile off of highway 22. A nice mixture of half treed and half open land. Nice and private location.



Essential Information

MLS® #	E4411519
Price	\$79,000
Bathrooms	0.00
Acres	4.99
Type	Rural
Sub-Type	Vacant Lot/Land
Status	Active

Community Information

Address	Ne 8-48-6-w5
Area	Rural Brazeau County
Subdivision	None
City	Rural Brazeau County
County	ALBERTA
Province	AB
Postal Code	T0C 0S0

Exterior

Exterior Features Flat Site, Recreation Use, Pa



Additional Information

Date Listed October 23rd, 2024

Days on Market 165

Zoning Zone 90

DATA IS DEEMED RELIABLE BUT IS NOT GUARANTEED ACCURATE BY THE REALTORS® ASSOCIATION OF EDMONTON. COPYRIGHT 2025 BY THE REALTORS® ASSOCIATION OF EDMONTON. ALL RIGHTS RESERVED. Trademarks are owned or controlled by the Canadian Real Estate Association (CREA) and identify real estate professionals who are members of CREA (REALTOR®, REALTORS®) and/or the quality of services they provide (MLS®, Multiple Listing Service®)

Listing information last updated on April 6th, 2025 at 3:02pm MDT