

# \$0 - 1101 16 Avenue, Nisku

MLS® #E4413632

**\$0**

0 Bedroom, 0.00 Bathroom,  
Industrial on 0.00 Acres

Nisku, Nisku, AB

- 16,802 sq.ft.± office/warehouse available for lease on 1.2 acres± - Two 10 ton bridge cranes - Improved and fenced yard - 18â€™™x18â€™™ grade loading bays with make up air and sumps - Easy access to high load corridor, Highway 625, and QEII Highway

Built in 2010

## Essential Information

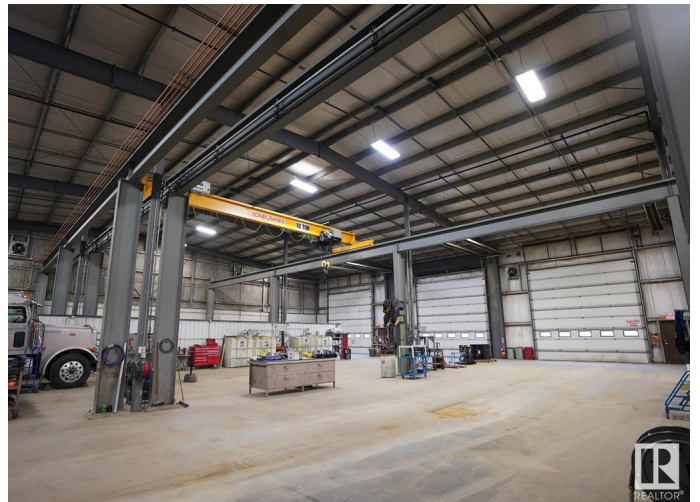
MLS® #	E4413632
Bathrooms	0.00
Acres	0.00
Year Built	2010
Type	Industrial
Status	Active

## Community Information

Address	1101 16 Avenue
Area	Nisku
Subdivision	Nisku
City	Nisku
County	ALBERTA
Province	AB
Postal Code	T9E 0A8

## Exterior

Exterior Concrete, Mixed



TOTAL: 32,636 SF±

Construction      Concrete, Mixed

### **Additional Information**

Date Listed      November 14th, 2024

Days on Market      142

Zoning      Zone 81

DATA IS DEEMED RELIABLE BUT IS NOT GUARANTEED ACCURATE BY THE REALTORS® ASSOCIATION OF EDMONTON. COPYRIGHT 2025 BY THE REALTORS® ASSOCIATION OF EDMONTON. ALL RIGHTS RESERVED. Trademarks are owned or controlled by the Canadian Real Estate Association (CREA) and identify real estate professionals who are members of CREA (REALTOR®, REALTORS®) and/or the quality of services they provide (MLS®, Multiple Listing Service®)

Listing information last updated on April 5th, 2025 at 4:02pm MDT