

\$0 - 4819 99 Street, Edmonton

MLS® #E4418996

\$0

0 Bedroom, 0.00 Bathroom,
Industrial on 0.00 Acres

Papaschase Industrial, Edmonton, AB

Take advantage of being positioned along a major arterial road, 99 Street, that links the south of Edmonton to Downtown and provides ample exposure to over 28,000 vehicles per day. The available spaces feature a practical mixture of showroom, office and warehouse spaces with grade loading and is zoned as Industrial Business (IB), allowing for a wide range of uses. +/-2,400 SF high exposure bay with mezzanine for lease. Well-maintained property with excellent visibility and signage. Ample front and rear parking on site. Positioned along 99 Street, the property allows for easy access to other major arterial roads such as Gateway Boulevard, Calgary Trail and Whitemud Drive.

Built in 1971

Essential Information

MLS® #	E4418996
Bathrooms	0.00
Acres	0.00
Year Built	1971
Type	Industrial
Status	Active

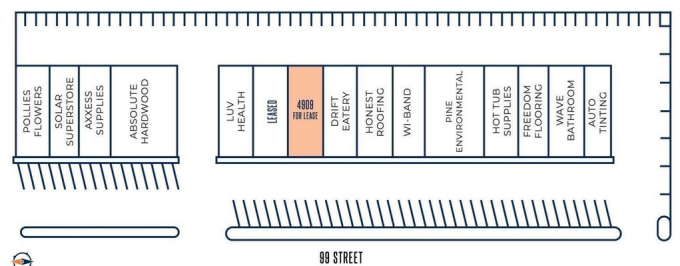
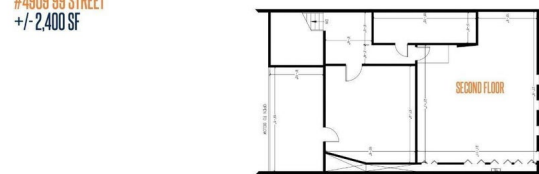
Community Information

Address	4819 99 Street
Area	Edmonton



FLOOR PLANS / 99TH STREET POWER CENTRE
4809 99 STREET, EDMONTON, AB

#4809 99 STREET
+/-2,400 SF



Subdivision	Papaschase Industrial
City	Edmonton
County	ALBERTA
Province	AB
Postal Code	T6E 4Y1

Exterior

Exterior	Brick, Concrete
Construction	Brick, Concrete

Additional Information

Date Listed	January 23rd, 2025
Days on Market	72
Zoning	Zone 41

DATA IS DEEMED RELIABLE BUT IS NOT GUARANTEED ACCURATE BY THE REALTORS® ASSOCIATION OF EDMONTON. COPYRIGHT 2025 BY THE REALTORS® ASSOCIATION OF EDMONTON. ALL RIGHTS RESERVED. Trademarks are owned or controlled by the Canadian Real Estate Association (CREA) and identify real estate professionals who are members of CREA (REALTOR®, REALTORS®) and/or the quality of services they provide (MLS®, Multiple Listing Service®)

Listing information last updated on April 5th, 2025 at 11:32am MDT