

\$280,000 - 137 10909 106 Street, Edmonton

MLS® #E4419591

\$280,000

1 Bedroom, 2.50 Bathroom, 1,273 sqft
Condo / Townhouse on 0.00 Acres

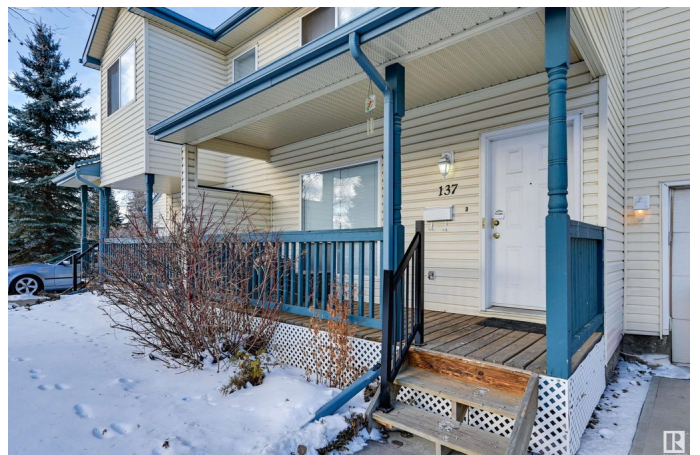
Central Mcdougall, Edmonton, AB

Prime Centrally Located Townhouse! Located minutes from downtown, this two-storey townhouse in McDougall Landing offers approximately 1,390 sq. ft. of living space across two levels, plus a basement. The property features a front porch, a single attached garage, and a rear deck. The main floor includes a spacious living room with a corner fireplace, a kitchen with an island and lots of storage, a dining area, and a 2-piece powder room. The upper level consists of a primary bedroom with a walk-in closet, two additional bedrooms, and a 4-piece bathroom. Situated in a well-maintained complex with mature tree-lined streets, the home is within walking distance of the LRT, MacEwan University, NAIT, Rogers Arena, Kingsway Mall, and the Royal Alexandra Hospital.

Built in 2002

Essential Information

| | |
|----------------|-----------|
| MLS® # | E4419591 |
| Price | \$280,000 |
| Bedrooms | 1 |
| Bathrooms | 2.50 |
| Full Baths | 2 |
| Half Baths | 1 |
| Square Footage | 1,273 |
| Acres | 0.00 |



| | |
|------------|-------------------|
| Year Built | 2002 |
| Type | Condo / Townhouse |
| Sub-Type | Townhouse |
| Style | 2 Storey |
| Status | Active |

Community Information

| | |
|-------------|----------------------|
| Address | 137 10909 106 Street |
| Area | Edmonton |
| Subdivision | Central Mcdougall |
| City | Edmonton |
| County | ALBERTA |
| Province | AB |
| Postal Code | T5H 4M7 |

Amenities

| | |
|-----------|------------------------|
| Amenities | See Remarks |
| Parking | Single Garage Attached |

Interior

| | |
|-------------------|---------------------------|
| Interior Features | ensuite bathroom |
| Appliances | See Remarks |
| Heating | Forced Air-1, Natural Gas |
| Stories | 3 |
| Has Basement | Yes |
| Basement | Full, Partially Finished |

Exterior

| | |
|-------------------|---|
| Exterior | Wood, Vinyl |
| Exterior Features | Landscaped, Playground Nearby, Schools, Shopping Nearby |
| Roof | Asphalt Shingles |
| Construction | Wood, Vinyl |
| Foundation | Concrete Perimeter |

Additional Information

| | |
|-----------------|--------------------|
| Date Listed | January 29th, 2025 |
| Days on Market | 68 |
| Zoning | Zone 08 |
| RE / Bank Owned | Yes |

Condo Fee \$376

DATA IS DEEMED RELIABLE BUT IS NOT GUARANTEED ACCURATE BY THE REALTORS® ASSOCIATION OF EDMONTON. COPYRIGHT 2025 BY THE REALTORS® ASSOCIATION OF EDMONTON. ALL RIGHTS RESERVED. Trademarks are owned or controlled by the Canadian Real Estate Association (CREA) and identify real estate professionals who are members of CREA (REALTOR®, REALTORS®) and/or the quality of services they provide (MLS®, Multiple Listing Service®)

Listing information last updated on April 6th, 2025 at 11:47pm MDT