

# \$219,000 - 313 11425 105 Avenue, Edmonton

MLS® #E4420996

**\$219,000**

2 Bedroom, 2.00 Bathroom, 842 sqft

Condo / Townhouse on 0.00 Acres

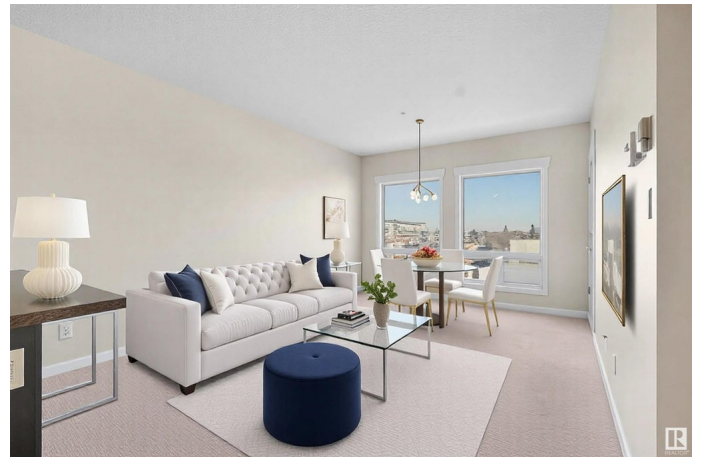
Queen Mary Park, Edmonton, AB

Welcome to The Zen! This fantastic apartment complex is ideally situated just a short walk from downtown's best amenities and Grant MacEwan University, offering the perfect blend of convenience and comfort. Step inside to discover modern vinyl plank flooring throughout, sleek stainless steel appliances, and spacious bedrooms. The open-concept floorplan creates a bright and airy living space, complete with a spacious eat-in kitchen. Enjoy the added perks of in-suite laundry, a private entrance, and a patio. Don't miss your chance to live in one of the most sought-after locations in the city! Immediate possession.

Built in 2010

## Essential Information

MLS® #	E4420996
Price	\$219,000
Bedrooms	2
Bathrooms	2.00
Full Baths	2
Square Footage	842
Acres	0.00
Year Built	2010
Type	Condo / Townhouse
Sub-Type	Lowrise Apartment



Style Single Level Apartment  
Status Active

### Community Information

Address 313 11425 105 Avenue  
Area Edmonton  
Subdivision Queen Mary Park  
City Edmonton  
County ALBERTA  
Province AB  
Postal Code T5H 0C5

### Amenities

Amenities Secured Parking, Security Door, See Remarks  
Parking Spaces 1  
Parking Heated, Underground

### Interior

Interior Features ensuite bathroom  
Appliances Dishwasher-Built-In, Dryer, Oven-Microwave, Refrigerator,  
Stove-Electric, Washer  
Heating In Floor Heat System, Natural Gas  
# of Stories 6  
Stories 1  
Has Basement Yes  
Basement None, No Basement

### Exterior

Exterior Steel, Brick, Stucco  
Exterior Features Playground Nearby, Public Transportation, Schools, Shopping Nearby  
Roof Tar & Gravel  
Construction Steel, Brick, Stucco  
Foundation Concrete Perimeter

### Additional Information

Date Listed February 10th, 2025  
Days on Market 56  
Zoning Zone 08  
Condo Fee \$480

DATA IS DEEMED RELIABLE BUT IS NOT GUARANTEED ACCURATE BY THE REALTORS® ASSOCIATION OF EDMONTON. COPYRIGHT 2025 BY THE REALTORS® ASSOCIATION OF EDMONTON. ALL RIGHTS RESERVED. Trademarks are owned or controlled by the Canadian Real Estate Association (CREA) and identify real estate professionals who are members of CREA (REALTOR®, REALTORS®) and/or the quality of services they provide (MLS®, Multiple Listing Service®)

Listing information last updated on April 7th, 2025 at 12:17am MDT