

\$780,000 - 106 53319 Rge Road 14, Rural Parkland County

MLS® #E4421010

\$780,000

4 Bedroom, 3.50 Bathroom, 3,006 sqft
Rural on 1.31 Acres

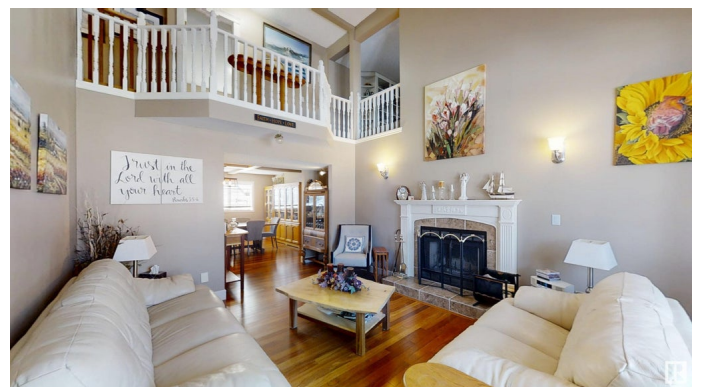
Glory Lake Park, Rural Parkland County, AB

Nestled in the serene and sought-after community of Glory Lake Park, this beautifully maintained 4-bedroom, 4-bathroom home offers the perfect blend of comfort, convenience, and style. Built in 1995, this spacious two-storey property has been thoughtfully designed for modern living, featuring both elegant and functional spaces. The home boasts a main floor primary bedroom with an ensuite bathroom, offering a private retreat for relaxation and rest. The heart of the home is its open-concept living and dining areas, with large windows that flood the space with natural light. The kitchen is a chef's dream, equipped with modern appliances and plenty of counter space. With 4 well-appointed bathrooms, including a convenient powder room on the main floor, everyone will enjoy comfort and privacy. Step outside and enjoy the 24' by 32' workshop, the perfect space for any project!

Built in 1995

Essential Information

| | |
|-----------|-----------|
| MLS® # | E4421010 |
| Price | \$780,000 |
| Bedrooms | 4 |
| Bathrooms | 3.50 |



| | |
|----------------|------------------------|
| Full Baths | 3 |
| Half Baths | 1 |
| Square Footage | 3,006 |
| Acres | 1.31 |
| Year Built | 1995 |
| Type | Rural |
| Sub-Type | Detached Single Family |
| Style | 2 Storey |
| Status | Active |

Community Information

| | |
|-------------|-----------------------|
| Address | 106 53319 Rge Road 14 |
| Area | Rural Parkland County |
| Subdivision | Glory Lake Park |
| City | Rural Parkland County |
| County | ALBERTA |
| Province | AB |
| Postal Code | T7Y 0C2 |

Amenities

| | |
|----------|--|
| Features | Deck, Detectors Smoke, No Smoking Home |
|----------|--|

Interior

| | |
|-------------------|---------------------------|
| Interior Features | ensuite bathroom |
| Heating | Forced Air-1, Natural Gas |
| Fireplace | Yes |
| Stories | 3 |
| Has Basement | Yes |
| Basement | Full, Finished |

Exterior

| | |
|-------------------|--|
| Exterior | Wood |
| Exterior Features | Backs Onto Park/Trees, Landscaped, Park/Reserve, Schools, Partially Fenced |
| Construction | Wood |
| Foundation | Block |

Additional Information

| | |
|-------------|---------------------|
| Date Listed | February 10th, 2025 |
|-------------|---------------------|

Days on Market 32
Zoning Zone 70



DATA IS DEEMED RELIABLE BUT IS NOT GUARANTEED ACCURATE BY THE REALTORS® ASSOCIATION OF EDMONTON. COPYRIGHT 2025 BY THE REALTORS® ASSOCIATION OF EDMONTON. ALL RIGHTS RESERVED. Trademarks are owned or controlled by the Canadian Real Estate Association (CREA) and identify real estate professionals who are members of CREA (REALTOR®, REALTORS®) and/or the quality of services they provide (MLS®, Multiple Listing Service®)

Listing information last updated on March 14th, 2025 at 7:32am MDT