

Courtesy Of James MacDonald Of Real Broker

## \$550,000 - 7283 Morgan Road, Edmonton

MLS® #E4424337

**\$550,000**

4 Bedroom, 3.50 Bathroom, 1,553 sqft  
Single Family on 0.00 Acres

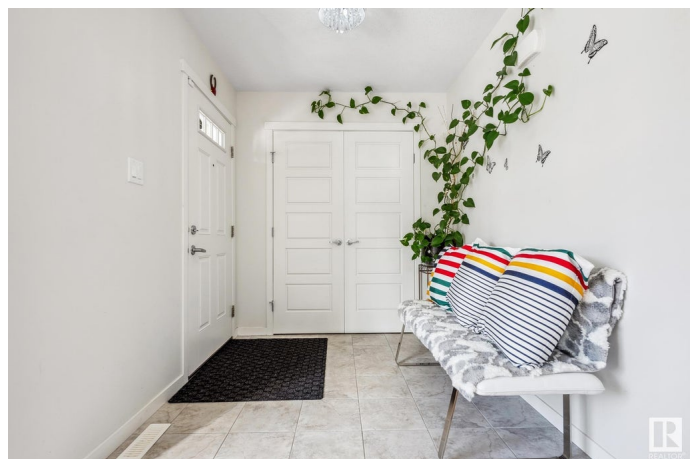
Griesbach, Edmonton, AB

Welcome to this beautiful 2-storey home in Griesbach! Built in 2017, it features a modern design with thoughtful touches throughout. The open-concept main floor is perfect for daily living and entertaining, with a huge island, granite countertops, stainless steel appliances, and 36 upper cabinets. The space flows seamlessly into the living and dining areas, creating a warm and welcoming feel. Upstairs, the primary suite offers a walk-in closet and ensuite, plus two more bedrooms and a full bath. The newly finished basement adds a spacious bedroom, rec room, or office. Stay comfortable year-round with central A/C. Outside, enjoy a custom deck, patio, and pet-friendly gravel area. The oversized 22'x24' garage fits larger vehicles. Located in one of Edmonton's best communities, this home is just minutes from parks, trails, and top amenities!

Built in 2017

### Essential Information

MLS® #	E4424337
Price	\$550,000
Bedrooms	4
Bathrooms	3.50
Full Baths	3
Half Baths	1



Square Footage	1,553
Acres	0.00
Year Built	2017
Type	Single Family
Sub-Type	Detached Single Family
Style	2 Storey
Status	Active

### **Community Information**

Address	7283 Morgan Road
Area	Edmonton
Subdivision	Griesbach
City	Edmonton
County	ALBERTA
Province	AB
Postal Code	T5E 6V7

### **Amenities**

Amenities	Air Conditioner, Deck, Patio
Parking	Double Garage Detached, Over Sized

### **Interior**

Interior Features	ensuite bathroom
Appliances	Air Conditioning-Central, Dishwasher-Built-In, Dryer, Garage Control, Garage Opener, Microwave Hood Fan, Refrigerator, Stove-Electric, See Remarks
Heating	Forced Air-1, Natural Gas
Stories	3
Has Basement	Yes
Basement	Full, Finished

### **Exterior**

Exterior	Wood, Vinyl
Exterior Features	Back Lane, Landscaped, Low Maintenance Landscape, Paved Lane, Playground Nearby, Public Transportation, Schools, Shopping Nearby
Roof	Asphalt Shingles
Construction	Wood, Vinyl
Foundation	Concrete Perimeter

### **Additional Information**

Date Listed March 6th, 2025

Days on Market 32

Zoning Zone 27

DATA IS DEEMED RELIABLE BUT IS NOT GUARANTEED ACCURATE BY THE REALTORS® ASSOCIATION OF EDMONTON. COPYRIGHT 2025 BY THE REALTORS® ASSOCIATION OF EDMONTON. ALL RIGHTS RESERVED. Trademarks are owned or controlled by the Canadian Real Estate Association (CREA) and identify real estate professionals who are members of CREA (REALTOR®, REALTORS®) and/or the quality of services they provide (MLS®, Multiple Listing Service®)

Listing information last updated on April 7th, 2025 at 9:32am MDT