

\$259,900 - 505 454029 Rge Rd 11, Rural Wetaskiwin County

MLS® #E4425233

\$259,900

1 Bedroom, 0.50 Bathroom, 571 sqft
Rural on 0.15 Acres

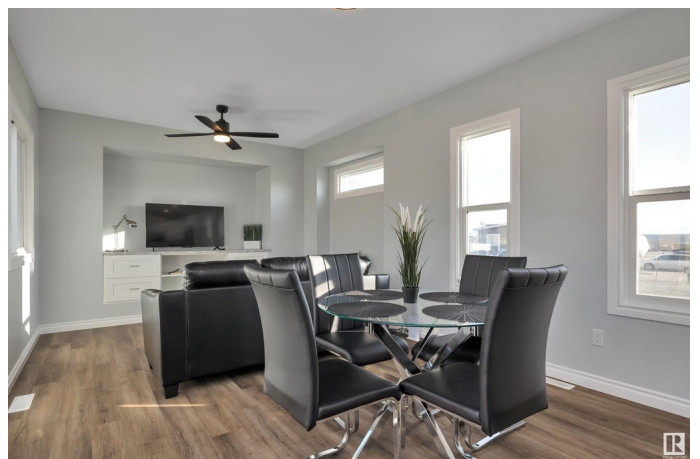
Dorchester Ranch, Rural Wetaskiwin County,
AB

Discover the perfect blend of modern comfort and natural beauty with this exceptional 4-season home located in the desirable Cavallo Ridge community. Boasting panoramic views of the #8 fairway and green, this home is a dream for golf enthusiasts and those who appreciate serene landscapes. Step inside to an open and airy design that welcomes you with a sense of space and light. The expansive kitchen offers plenty of room for culinary adventures, complete with modern finishes that make it as functional as it is stylish. The open-concept layout seamlessly connects the kitchen to the living and dining areas, creating an inviting space perfect for entertaining or simply relaxing with family. Located just 6km south of the Village at Pigeon Lake, this home offers the ideal setting for those looking to downsize without sacrificing luxury. Enjoy the benefits of a close-knit community while still having easy access to local amenities and the natural beauty of the surrounding area.

Built in 2023

Essential Information

MLS® #	E4425233
Price	\$259,900



Bedrooms	1
Bathrooms	0.50
Half Baths	1
Square Footage	571
Acres	0.15
Year Built	2023
Type	Rural
Sub-Type	Detached Single Family
Style	Bungalow
Status	Active

Community Information

Address	505 454029 Rge Rd 11
Area	Rural Wetaskiwin County
Subdivision	Dorchester Ranch
City	Rural Wetaskiwin County
County	ALBERTA
Province	AB
Postal Code	T0C 2V0

Amenities

Features	Front Porch, Hot Water Instant, No Animal Home
----------	--

Interior

Heating	Forced Air-1, Propane
Stories	1
Has Basement	Yes
Basement	None, No Basement

Exterior

Exterior	Modular
Exterior Features	Golf Nearby, Landscaped, Private Setting, Recreation Use, Schools, Shopping Nearby
Construction	Modular
Foundation	Piling

Additional Information

Date Listed	March 11th, 2025
Days on Market	29

Zoning

Zone 90

DATA IS DEEMED RELIABLE BUT IS NOT GUARANTEED ACCURATE BY THE REALTORS® ASSOCIATION OF EDMONTON. COPYRIGHT 2025 BY THE REALTORS® ASSOCIATION OF EDMONTON. ALL RIGHTS RESERVED. Trademarks are owned or controlled by the Canadian Real Estate Association (CREA) and identify real estate professionals who are members of CREA (REALTOR®, REALTORS®) and/or the quality of services they provide (MLS®, Multiple Listing Service®)

Listing information last updated on April 9th, 2025 at 4:17am MDT