

Courtesy Of Tammy A Booth Of 2% Realty

\$429,900 - 20513 128 Avenue, Edmonton

MLS® #E4425441

\$429,900

3 Bedroom, 3.50 Bathroom, 1,460 sqft
Single Family on 0.00 Acres

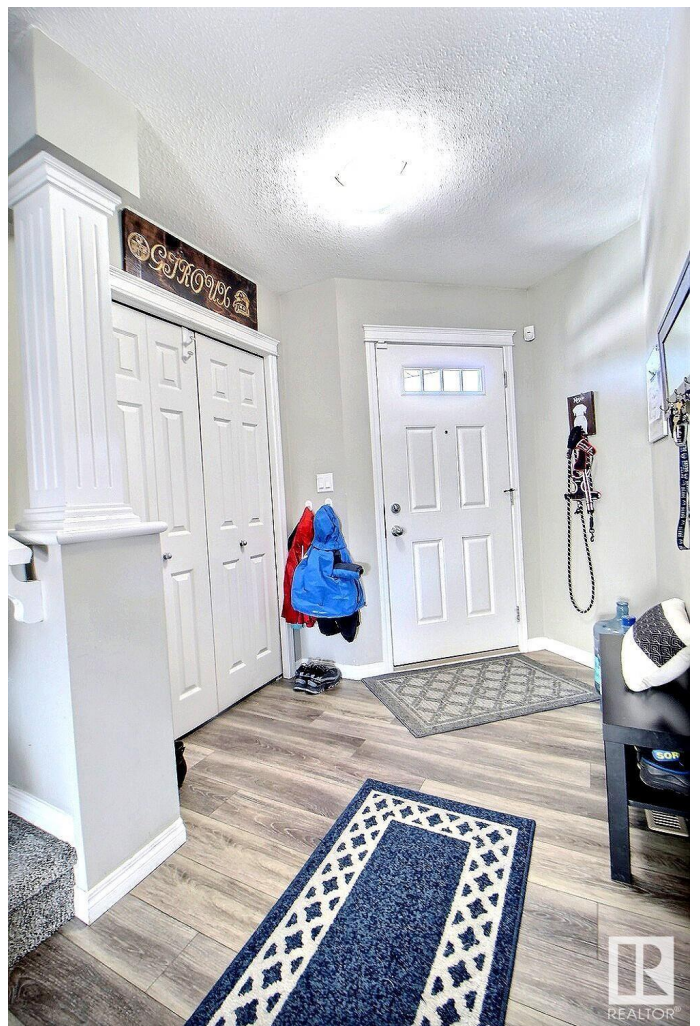
Trumpeter Area, Edmonton, AB

Welcom to TRUMPETER! Montoria built 2 storey duplex offering over 2050 sqft of total living space with a fully finished basement. An OPEN CONCEPT main floor with an inviting living room. Kitchen with QUARTZ COUNTERTOPS, plenty of cabinet space, centre island, TILE BACKSPLASH, a spacious corner PANTRY and STAINLESS STEEL APPLIANCES. The second-floor features 3 generous sized bedrooms, a 4-piece bathroom. PRIMARY SUITE boasts a sizable WALK-IN closet and a 4pc ENSUITE. The developed basement offers a recreational family room, loads of storage and a modern 3 pc bathroom. No back door neighbours. Attractively landscaped with full fence and a sizable 2 tiered deck and storage shed. Walking distance to stores, kids playground, Lois hole park, and golf club.

Built in 2017

Essential Information

MLS® #	E4425441
Price	\$429,900
Bedrooms	3
Bathrooms	3.50
Full Baths	3
Half Baths	1
Square Footage	1,460



Acres	0.00
Year Built	2017
Type	Single Family
Sub-Type	Half Duplex
Style	2 Storey
Status	Active

Community Information

Address	20513 128 Avenue
Area	Edmonton
Subdivision	Trumpeter Area
City	Edmonton
County	ALBERTA
Province	AB
Postal Code	T5S 0L8

Amenities

Amenities	Deck, Gazebo
Parking	Single Garage Attached

Interior

Interior Features	ensuite bathroom
Appliances	Dishwasher-Built-In, Dryer, Garage Control, Garage Opener, Microwave Hood Fan, Refrigerator, Stove-Electric, Washer, Window Coverings
Heating	Forced Air-1, Natural Gas
Stories	3
Has Basement	Yes
Basement	Full, Finished

Exterior

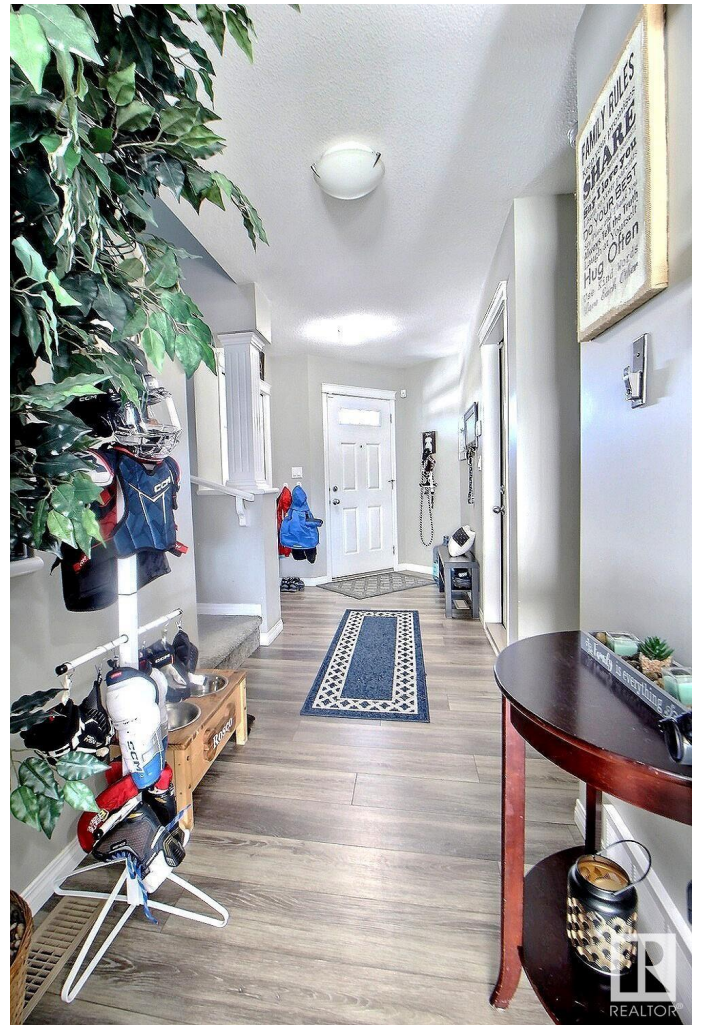
Exterior	Wood, Vinyl
Exterior Features	Cul-De-Sac, Fenced, Landscaped, No Back Lane
Roof	Asphalt Shingles
Construction	Wood, Vinyl
Foundation	Concrete Perimeter

Additional Information

Date Listed	March 13th, 2025
Days on Market	30

Zoning

Zone 59



DATA IS DEEMED RELIABLE BUT IS NOT GUARANTEED ACCURATE BY THE REALTORS® ASSOCIATION OF EDMONTON. COPYRIGHT 2025 BY THE REALTORS® ASSOCIATION OF EDMONTON. ALL RIGHTS RESERVED. Trademarks are owned or controlled by the Canadian Real Estate Association (CREA) and identify real estate professionals who are members of CREA (REALTOR®, REALTORS®) and/or the quality of services they provide (MLS®, Multiple Listing Service®)

Listing information last updated on April 12th, 2025 at 4:02am MDT