

Courtesy Of Jane Vu Of Real Broker

\$720,000 - 628 Ortona Way, Edmonton

MLS® #E4425483

\$720,000

5 Bedroom, 3.50 Bathroom, 1,758 sqft
Single Family on 0.00 Acres

Griesbach, Edmonton, AB

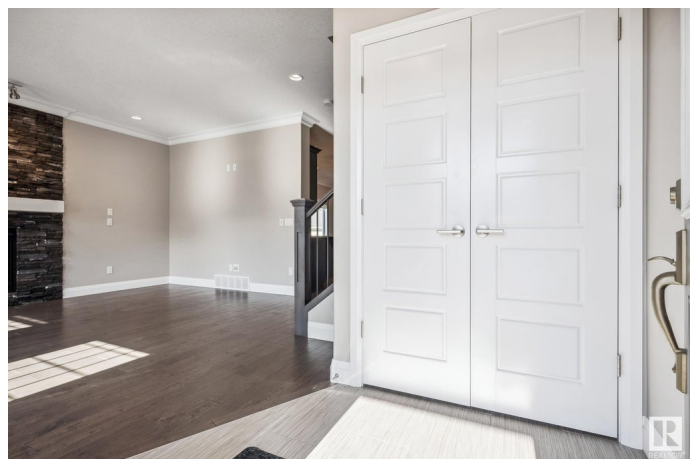
LEGAL BASEMENT SUITE & EXTRA SPACE FOR FUTURE GARAGE SUITE. This

high-end 1,758.30 sq. ft. 2-storey home in Griesbach combines style, function, and income potential with a legal 2-bedroom basement suite. The main floor features 9 ft. ceilings, a gourmet kitchen with quartz countertops, custom maple cabinets, and a large island with an eating bar. The living room's stone-accented gas fireplace adds warmth, while the dining area is perfect for hosting. A 2-piece bath and main floor laundry complete the space. Upstairs, the primary suite offers a walk-in closet and spa-like ensuite, with two more bedrooms and a 4-piece bath rounding out the level. The fully finished basement suite has its own laundry, full kitchen, second family area, and 2 bedrooms. Outside, enjoy a 10x22 covered deck, landscaped yard, and an oversized double garage with space for a future garage suite. All this in a prime community with parks, trails, and top amenities nearby!

Built in 2016

Essential Information

| | |
|----------|-----------|
| MLS® # | E4425483 |
| Price | \$720,000 |
| Bedrooms | 5 |



| | |
|----------------|------------------------|
| Bathrooms | 3.50 |
| Full Baths | 3 |
| Half Baths | 1 |
| Square Footage | 1,758 |
| Acres | 0.00 |
| Year Built | 2016 |
| Type | Single Family |
| Sub-Type | Detached Single Family |
| Style | 2 Storey |
| Status | Active |

Community Information

| | |
|-------------|----------------|
| Address | 628 Ortona Way |
| Area | Edmonton |
| Subdivision | Griesbach |
| City | Edmonton |
| County | ALBERTA |
| Province | AB |
| Postal Code | T5E 6S9 |

Amenities

| | |
|----------------|--|
| Amenities | Carbon Monoxide Detectors, Ceiling 9 ft., Deck, Detectors Smoke, No Animal Home, No Smoking Home, Patio, Vinyl Windows |
| Parking Spaces | 4 |
| Parking | Double Garage Detached |

Interior

| | |
|-------------------|---|
| Interior Features | ensuite bathroom |
| Appliances | Alarm/Security System, Dishwasher-Built-In, Dryer, Microwave Hood Fan, Refrigerator, Stove-Electric, Vacuum Systems, Washer, Window Coverings |
| Heating | Forced Air-1, Forced Air-2, Natural Gas |
| Fireplace | Yes |
| Fireplaces | Mantel |
| Stories | 3 |
| Has Basement | Yes |
| Basement | Full, Finished |

Exterior

| | |
|-------------------|--|
| Exterior | Wood, Stone, Vinyl |
| Exterior Features | Back Lane, Corner Lot, Cul-De-Sac, Fenced, Flat Site, Playground Nearby, Public Swimming Pool, Public Transportation, Schools, Shopping Nearby |
| Roof | Asphalt Shingles |
| Construction | Wood, Stone, Vinyl |
| Foundation | Concrete Perimeter |

School Information

| | |
|------------|-------------------------|
| Elementary | Major-General Griesbach |
| Middle | Major-General Griesbach |
| High | Queen Elizabeth |

Additional Information

| | |
|----------------|------------------|
| Date Listed | March 13th, 2025 |
| Days on Market | 23 |
| Zoning | Zone 27 |

DATA IS DEEMED RELIABLE BUT IS NOT GUARANTEED ACCURATE BY THE REALTORS® ASSOCIATION OF EDMONTON. COPYRIGHT 2025 BY THE REALTORS® ASSOCIATION OF EDMONTON. ALL RIGHTS RESERVED. Trademarks are owned or controlled by the Canadian Real Estate Association (CREA) and identify real estate professionals who are members of CREA (REALTOR®, REALTORS®) and/or the quality of services they provide (MLS®, Multiple Listing Service®)

Listing information last updated on April 4th, 2025 at 10:47pm MDT