

\$289,900 - 53509 Rge Rd 60, Rural Parkland County

MLS® #E4425751

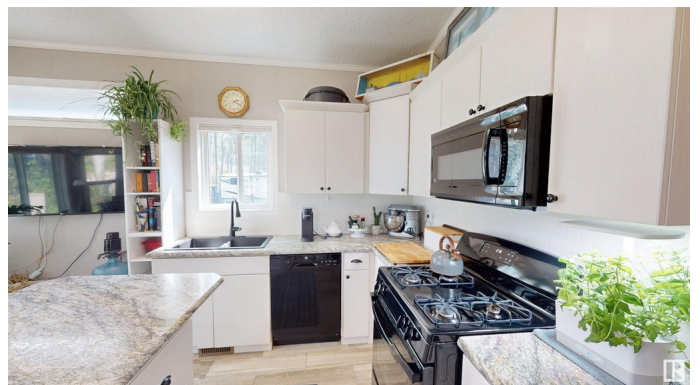
\$289,900

2 Bedroom, 1.00 Bathroom, 710 sqft

Rural on 0.15 Acres

Sunset Shores, Rural Parkland County, AB

Year-round resort living is within reach at Sunset Shores on Lake Isle, just an hour west of Edmonton and north of Seba Beach. This 2022 Triple M Endeavor 2 Bedroom Park Home is designed for four-season living, making it a perfect getaway or permanent residence. With all the modern features you'd expect in a conventional home, this tiny home offers the added benefits of lower utility and maintenance costs. The spacious lot features a large wraparound deck and a 10 x 16 gazebo, seamlessly extending your living space into the outdoors. Nestled in a scenic, tranquil area away from the main resort, this property offers a perfect blend of comfort and natural beauty. Whether you're seeking a peaceful retreat or a vibrant community experience, Sunset Shores provides an ideal setting for both relaxation and adventure. Enjoy the serene surroundings, recreational activities, and the ease of living in a home that is both efficient and stylish. Don't miss the opportunity to own this unique property!



Built in 2022

Essential Information

MLS® # E4425751

Price \$289,900

Bedrooms 2

Bathrooms	1.00
Full Baths	1
Square Footage	710
Acres	0.15
Year Built	2022
Type	Rural
Sub-Type	Detached Single Family
Style	Bungalow
Status	Active

Community Information

Address	53509 Rge Rd 60
Area	Rural Parkland County
Subdivision	Sunset Shores
City	Rural Parkland County
County	ALBERTA
Province	AB
Postal Code	T0E 2B0

Amenities

Features	Deck, Fire Pit, Gazebo, Lake Privileges, Recreation Room/Centre
----------	---

Interior

Heating	Forced Air-1, Propane
Stories	1
Has Basement	Yes
Basement	None, No Basement

Exterior

Exterior	Prefab
Exterior Features	Beach Access, Boating, Gated Community, Golf Nearby, Lake Access Property, Low Maintenance Landscape
Construction	Prefab
Foundation	Piling

Additional Information

Date Listed	March 14th, 2025
Days on Market	26
Zoning	Zone 75

Condo Fee \$2,460

DATA IS DEEMED RELIABLE BUT IS NOT GUARANTEED ACCURATE BY THE REALTORS® ASSOCIATION OF EDMONTON. COPYRIGHT 2025 BY THE REALTORS® ASSOCIATION OF EDMONTON. ALL RIGHTS RESERVED. Trademarks are owned or controlled by the Canadian Real Estate Association (CREA) and identify real estate professionals who are members of CREA (REALTOR®, REALTORS®) and/or the quality of services they provide (MLS®, Multiple Listing Service®)

Listing information last updated on April 9th, 2025 at 3:17am MDT