

\$275,000 - 13853 114 Street, Edmonton

MLS® #E4427610

\$275,000

3 Bedroom, 2.50 Bathroom, 1,073 sqft
Condo / Townhouse on 0.00 Acres

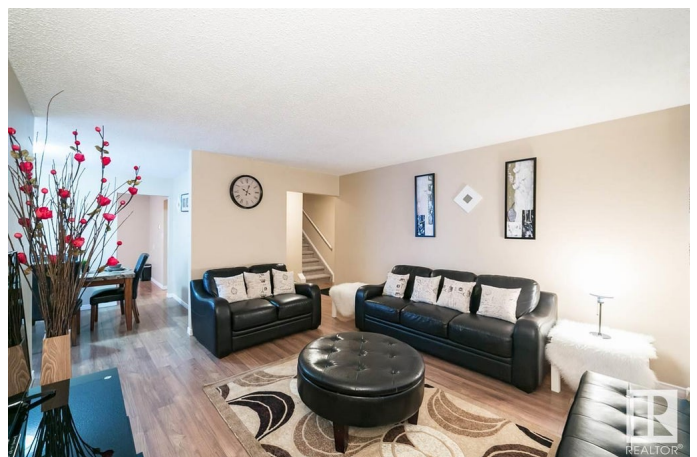
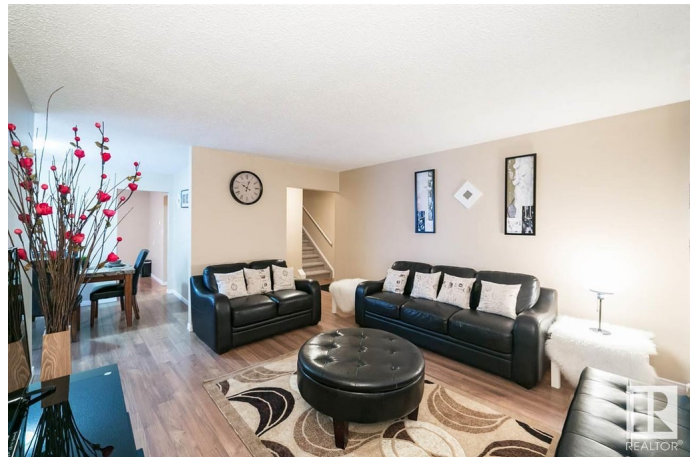
Carlisle, Edmonton, AB

Welcome to this well renovated 3+1 bedrooms 2.5 bathrooms home in Carlisle. Come from work and relax in the spacious living room. With the nice kitchen layout enjoy your cooking with ease. This home comes with newer FLOORING, nice kitchen COUNTER-TOP, and newly renovated BASEMENT BATH. The main floor is complete with a bedroom and a half bath. Great size bedrooms on the upper floor with a 4pc bath. The room in the basement can easily be converted into a 4th bedroom. 2nd full bathroom is in the basement. This home will surely please. Close to many amenities: schools, shopping, YMCA and downtown is few mins away. Lovely homes like this do not last on the market. Move-in ready. Perfect for first time or investor. Currently rented till end of June for \$1800.

Built in 1979

Essential Information

MLS® #	E4427610
Price	\$275,000
Bedrooms	3
Bathrooms	2.50
Full Baths	2
Half Baths	1
Square Footage	1,073
Acres	0.00



Year Built	1979
Type	Condo / Townhouse
Sub-Type	Half Duplex
Style	2 Storey
Status	Active

Community Information

Address	13853 114 Street
Area	Edmonton
Subdivision	Carlisle
City	Edmonton
County	ALBERTA
Province	AB
Postal Code	T5X 4A1

Amenities

Amenities	Off Street Parking, On Street Parking, No Animal Home, Parking-Visitor, See Remarks
Parking	Front Drive Access

Interior

Appliances	Dryer, Microwave Hood Fan, Refrigerator, Stove-Electric, Washer
Heating	Forced Air-1, Natural Gas
Stories	3
Has Basement	Yes
Basement	Full, Finished

Exterior

Exterior	Wood, Brick, Vinyl
Exterior Features	Fenced, Flat Site, Landscaped, No Back Lane, Public Transportation, Shopping Nearby
Roof	Asphalt Shingles
Construction	Wood, Brick, Vinyl
Foundation	Concrete Perimeter

School Information

Elementary	St. Timothy School
Middle	Sir John Thompson School
High	J. H. Picard School

Additional Information

Date Listed	March 26th, 2025
Days on Market	11
Zoning	Zone 27
Condo Fee	\$300

DATA IS DEEMED RELIABLE BUT IS NOT GUARANTEED ACCURATE BY THE REALTORS® ASSOCIATION OF EDMONTON. COPYRIGHT 2025 BY THE REALTORS® ASSOCIATION OF EDMONTON. ALL RIGHTS RESERVED. Trademarks are owned or controlled by the Canadian Real Estate Association (CREA) and identify real estate professionals who are members of CREA (REALTOR®, REALTORS®) and/or the quality of services they provide (MLS®, Multiple Listing Service®)

Listing information last updated on April 6th, 2025 at 5:17am MDT