

## \$559,900 - 2442 Kelly Circle, Edmonton

MLS® #E4428990

**\$559,900**

4 Bedroom, 3.50 Bathroom, 1,809 sqft

Single Family on 0.00 Acres

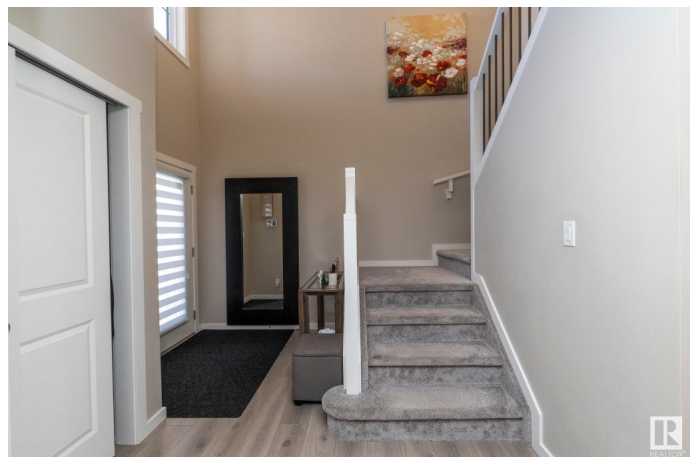
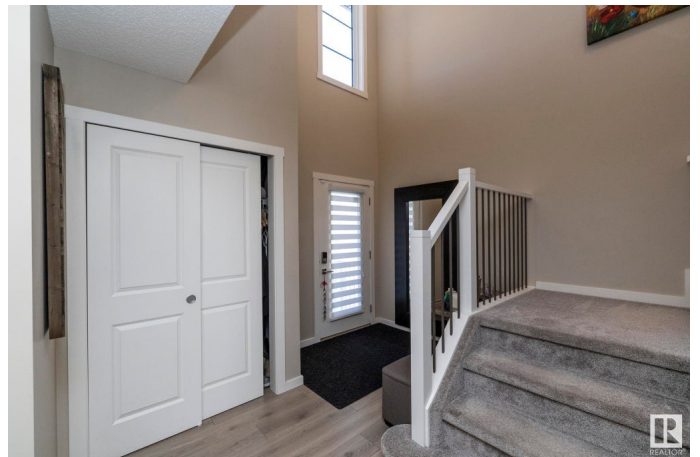
Keswick Area, Edmonton, AB

Welcome to this spacious 1800+ SQ.FT duplex in ONE AT KESWICK. The terrific home has a double attached garage, a FULLY FINISHED BASEMENT, CENTRAL A/C, a back yard oasis and sits a HUGE PIE SHAPED LOT. As you enter you are greeted with 16 foot ceilings and a terrific layout. The main floor has a modern kitchen featuring a wall of cabinetry, quartz countertops, and an island! There is also a mud room with laundry, a formal dining room, a living room with fireplace, another potential dining area, and a powder room. The upstairs has a HUGE BONUS ROOM and 3 good sized bedrooms including the primary bedroom with full ensuite and walk-in closet with built-ins. The FULLY FINISHED BASEMENT has another full bathroom, bedroom and large rec room. The massive back yard is perfect for entertaining and is nicely manicured, ready for you to enjoy this summer! Amazing location close to everything, and in a great location of Keswick. Welcome home:)

Built in 2018

### Essential Information

MLS® #	E4428990
Price	\$559,900
Bedrooms	4



Bathrooms	3.50
Full Baths	3
Half Baths	1
Square Footage	1,809
Acres	0.00
Year Built	2018
Type	Single Family
Sub-Type	Half Duplex
Style	2 Storey
Status	Active

### Community Information

Address	2442 Kelly Circle
Area	Edmonton
Subdivision	Keswick Area
City	Edmonton
County	ALBERTA
Province	AB
Postal Code	T6W 3S3

### Amenities

Amenities	Deck, No Smoking Home
Parking	Double Garage Attached

### Interior

Interior Features	ensuite bathroom
Appliances	Dishwasher-Built-In, Dryer, Microwave Hood Fan, Refrigerator, Stove-Electric, Washer
Heating	Forced Air-1, Natural Gas
Fireplace	Yes
Fireplaces	Insert
Stories	3
Has Basement	Yes
Basement	Full, Finished

### Exterior

Exterior	Wood, Stone, Hardie Board Siding
Exterior Features	Playground Nearby, Public Swimming Pool, Public Transportation, Schools, Shopping Nearby, Ski Hill Nearby

Roof	Asphalt Shingles
Construction	Wood, Stone, Hardie Board Siding
Foundation	Concrete Perimeter

**Additional Information**

Date Listed	April 4th, 2025
Days on Market	18
Zoning	Zone 56

DATA IS DEEMED RELIABLE BUT IS NOT GUARANTEED ACCURATE BY THE REALTORS® ASSOCIATION OF EDMONTON. COPYRIGHT 2025 BY THE REALTORS® ASSOCIATION OF EDMONTON. ALL RIGHTS RESERVED.Trademarks are owned or controlled by the Canadian Real Estate Association (CREA) and identify real estate professionals who are members of CREA (REALTOR®, REALTORS®) and/or the quality of services they provide (MLS®, Multiple Listing Service®)

Listing information last updated on April 22nd, 2025 at 5:02am MDT